

1000DL SERIES (Female Double Sided)

FEATURE

Insulator Material : PBT UL94V-0
 Contact Material : Phosphor Bronze
 Plating : Selective Gold Plating Over Nickel On Contact Area
 100µ" Tin Plating On Tail Section
 50µ" Nickel Underplating

SPECIFICATION

Current Rating : 3 Ampere
 Contact Resistance : 30 milliohms maximum
 Insulation Resistance : 5000 megohms minimum
 Voltage Rating : 800 VAC 1 minute
 Operation Temperature Range : -55°C to +105°C

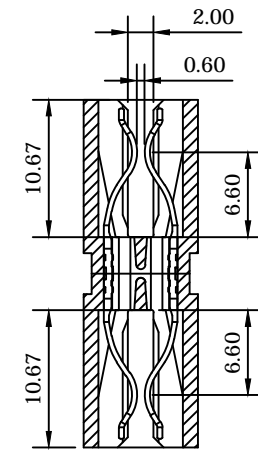
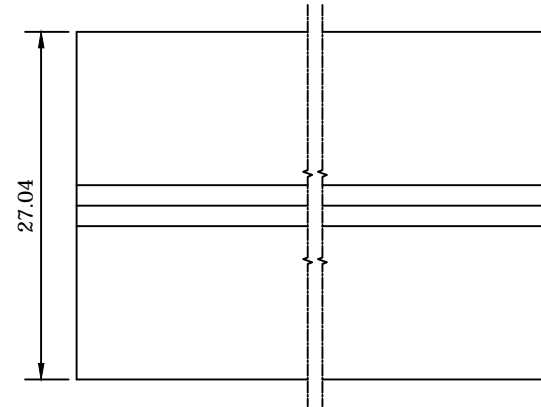
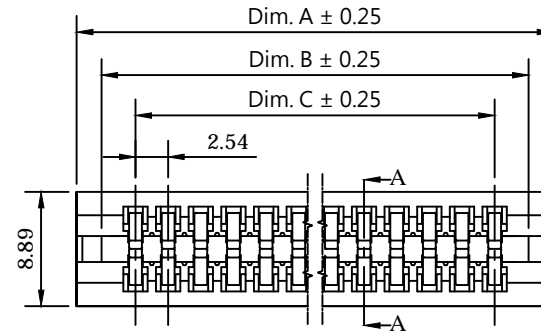
ORDERING INFORMATION

1000DL - □□□ - □ - □

No. of Contacts

Other Custom Options



Plating Code



SEC A - A

No. of Contacts	Dimensions (Dim.)			No. of Contacts	Dimensions (Dim.)		
	A	B	C		A	B	C
18/36	52.32	48.46	43.18	36/72	98.04	94.18	88.90
20/40	57.40	53.54	48.26	40/80	108.20	104.34	99.06
25/50	70.10	66.24	60.96	43/86	115.82	111.96	106.68
28/56	77.72	73.86	68.58	50/100	133.60	129.74	124.46
30/60	82.80	78.94	73.66	60/120	159.00	155.14	149.86
31/62	85.34	81.48	76.20	70/140	184.40	180.54	175.26

Plating Code	
1	10µ"
2	G/F
3	3µ"
4	5µ"
5	G/F Overall
6	30µ"
7	Tin Overall
8	15µ"
9	20µ"

Title : Customer Drawing		Type : Edgecard Connector		 彩電企業股份有限公司 CHARTRON INCORPORATION				
Part No. : 1000DL Series								
Description :				Tolerances Unless Otherwise Specified :				
Pitch 2.54 mm Edge Card Connector				X. ± 0.50 .X ± 0.38 .XX ± 0.25				
Female Double Sided Type				X. ° ± .X ° ± .XX ° ±				
Without Mounting Ear								
DWG No. : 010 - 0000 - 510DL		Date : 01 - Sept. - 2017			Dim.	Scale	Sheet	Rev.
APPD. : James C.	CHK. : Connie Z.	DRW. : Bryant C.	mm		N/A	1 of 1	A	